



Ag320R
Evaluation Board
User Manual

Version 0.1 – Jan 2016

1 Table of Contents

1	Table of Contents	1
2	Table of Figures	1
3	Introduction	2
4	Board Description	2
5	Test Setup	3

2 Table of Figures

Figure 1: EVALAg320R Board Layout.....	3
Figure 2: Basic set-up	3

3 Introduction

This manual is intended to be a guide to using the “EVALAg320R evaluation board” with a Silvertel Ag320R wireless power receiver module.

4 Board Description

The EVALAg320R evaluation board is powered through the power receiver coil L1 when placed on the interface surface of the EVALAg320T. When the Ag320R establishes a wireless power transfer contract to the power transmitter, D1 is illuminated and the output is switched on.

The output 12V is available on J6 or the center pin of J2. 0V will be available on J7 or the outer ring of J2.

If J3 is shorted the EVALAg320R will switch off the output and indicate to the power transmitter that the power transfer has completed successfully (e.g. battery fully charged).

If J4 is shorted the EVALAg320R will switch off the output and indicate a wireless power transfer error to the power transmitter (e.g. using an external over temperature circuit).

J5 can be used in conjunction with J6 of the EVALAg320T to send data back to the transmitter for the user’s application. See section **XXX** of the datasheet for full description of communications operation.

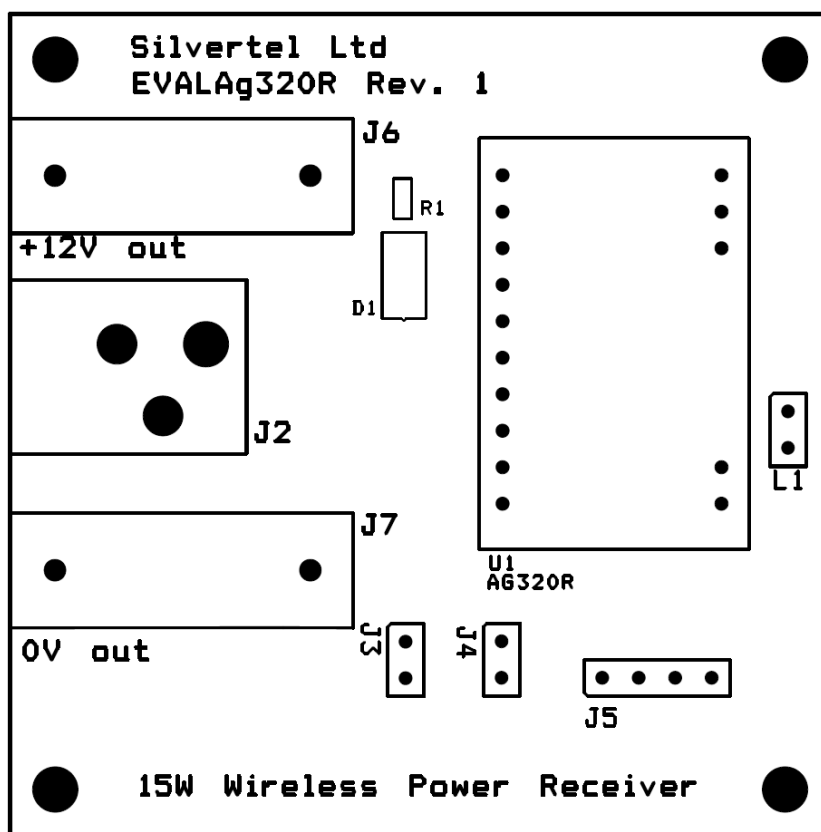


Figure 1: EVALAg320R Board Layout

5 Test Setup

Figure 4 shows the basic set up using the EVALAG320R evaluation board powered by the EVALAG320T evaluation board with a power supply input. EVALAG320R should have the load connected before placing in on the primary coil of the EVALAG320T.

The equipment required: -

- Power supply Input +12V IN e.g. 12V bench power supply
- Output power cable and load

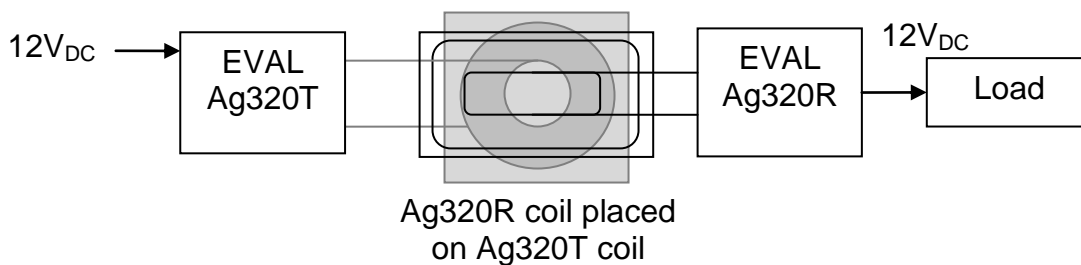


Figure2: Basic set-up