

ANX POE High Power Supply Gating



This application note shows how to gate a Silvertel High Power PoE module output with an external power supply.

The circuit shown in Figure 1 is for use with a Power Device (PD) module with a 12V output.

The Primary Input has priority and the Secondary Input is the back-up.

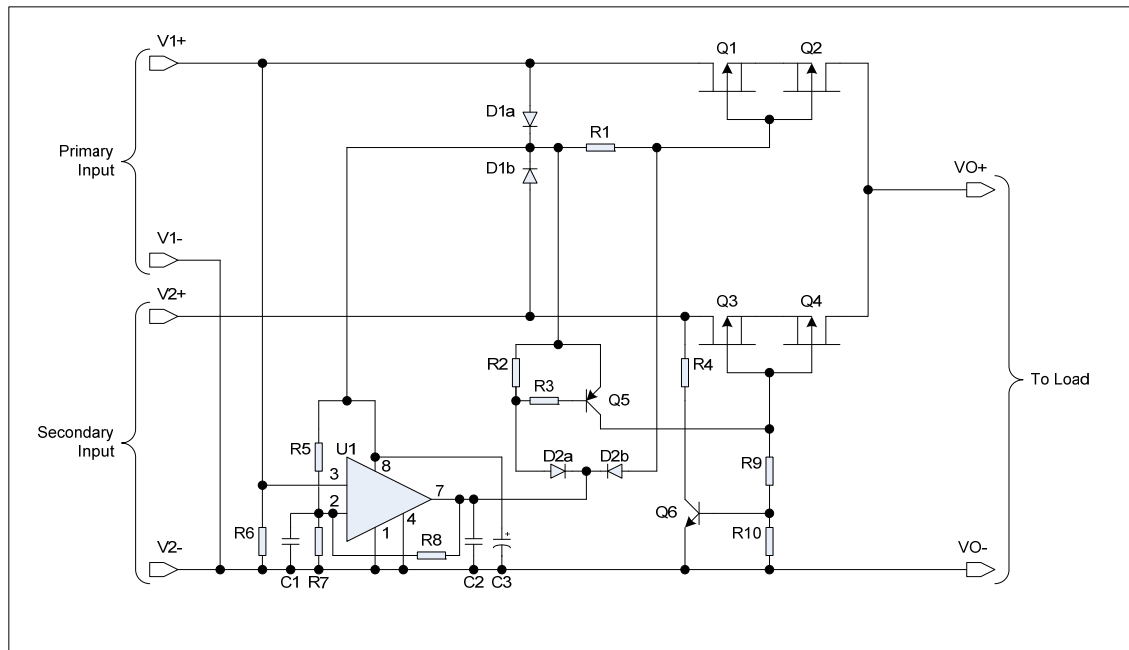


Figure 1: 12V Output

Bill of Materials: -

U1	LM311 (or suitable equivalent)
Q1 – Q4	NDT2955 (or suitable equivalent)
Q5	BC856 (or suitable equivalent)
Q6	BC817 (or suitable equivalent)
D1 – D2	BAV70 (or suitable equivalent)
C1 – C2	100nF
C3	100 μ F
R1	1K Ω
R2, R3, R5 & R10	100K Ω
R4	Minimum Load Resistor
R6	10K Ω
R7	510K Ω
R8	1M Ω
R9	2.4K Ω

(Resistor tolerance = $\pm 1\%$, Capacitor tolerance $\pm 20\%$)

